



CANADA'S SAFETY, HEALTH AND ENVIRONMENTAL PRACTITIONERS

CSSE



ANNUAL REPORT 2016



TABLE OF CONTENTS

President's Message	3
Financial Snapshot	4
CHSC Certification	5
Demographics	6
Board of Directors	7
Chapters	7
National Committees	8
CSSE Partnerships	15





"It is good to have an end to journey toward,
but it is the journey that matters in the end."

- Ursula K. LeGuin



PRESIDENT'S MESSAGE

Reflections On Our Journey

The 2015-2016 year was busy and productive for CSSE. Our dedicated Board of Directors, Chapter executives, volunteer committees and members across the country worked in many ways to advance our efforts in enhancing the value of membership and building organizational strength. Conversations took place among safety stakeholders across Canada and around the world, and it's clear we share a common commitment to safety.

As President, I had the opportunity to lead discussions about how CSSE can best move forward. At many levels, we assessed many ideas and options, ensuring that fiscal responsibility was at the forefront of all decisions, and we continued to be proactive in assessing opportunities for members to advance their skills and competencies in their daily responsibilities. All of this encompassed the efforts of many like-minded people who support CSSE's work through their vision, ideas, experiences, and success stories. I believe that all of this – and more – is part of the continuous journey that we, as safety professionals, have embraced.

Having been a part of CSSE for 30+ years, I've occasionally heard some safety practitioners questioning the value of membership and what members derive from it. People will ask "why should I join CSSE?" My belief is that anyone working in the safety profession must consider membership in CSSE because it is unequivocally an investment in your future. What I mean by this is that a lot is at stake with ensuring the safety of Canadian workers and it's vital to be connected in the right areas. CSSE members know only too well what learning and training are required to take on a health and safety role that puts the safety of workers "front and centre" at their workplace every day. Being better equipped to do this is where CSSE members have an edge and can make a difference. That's why CSSE has been working very hard to offer relevant and timely services and programs.

Yes, it's been a journey with smooth and bumpy roads. I am happy to report at this time that CSSE was able to weather the recent economic storm through prudent financial planning and continuing to focus on its mission and goals. For our members, the most important takeaway is that we are on a solid path and expect to continue to provide the level of value members expect from their professional association.

On the larger stage, CSSE continues to foster its relationships with like-minded organizations. We have a strong connection with the International Network of Safety and Health Practitioner Organizations (INSHPPO), a solid relationship with the Center for Safety & Health Sustainability, and important partnerships with BCRSP, AQHSST, ASSE, BCSP, IOSH, SIA and SISO, to name a few. I think this speaks to our desire to be inclusive and engaging, and to participate in initiatives that support our mandate. Most importantly, I have seen first-hand that all stakeholders benefit from the sharing of ideas and successes, which collectively helped to shape our profession and where we are today.

This past year has solidified my personal reflections on what has mattered most to me during my safety career. There have been many milestones and I can say that I have always been proud to be a CSSE member and serving as President of this wonderful organization has been an immense honour.

The people who work in safety are truly passionate and committed. In Canada, I have had the opportunity to meet people from BC to Newfoundland, and I am witness to the fact that the passion of safety professionals knows no provincial or territorial boundaries. While considerably smaller than many of our international peers, I can assure you that CSSE is well respected globally as we work together at building and shaping the safety profession. Moreover, this respect for CSSE bodes well for ensuring that members will be valued for the work they do wherever they are employed.

My wish is that CSSE's next generation of members continues to positively shape the safety profession. This past year has seen significant positive advancements and I believe CSSE is at the dawn of the next great leap forward.

Thank you for the honour of serving as your President.

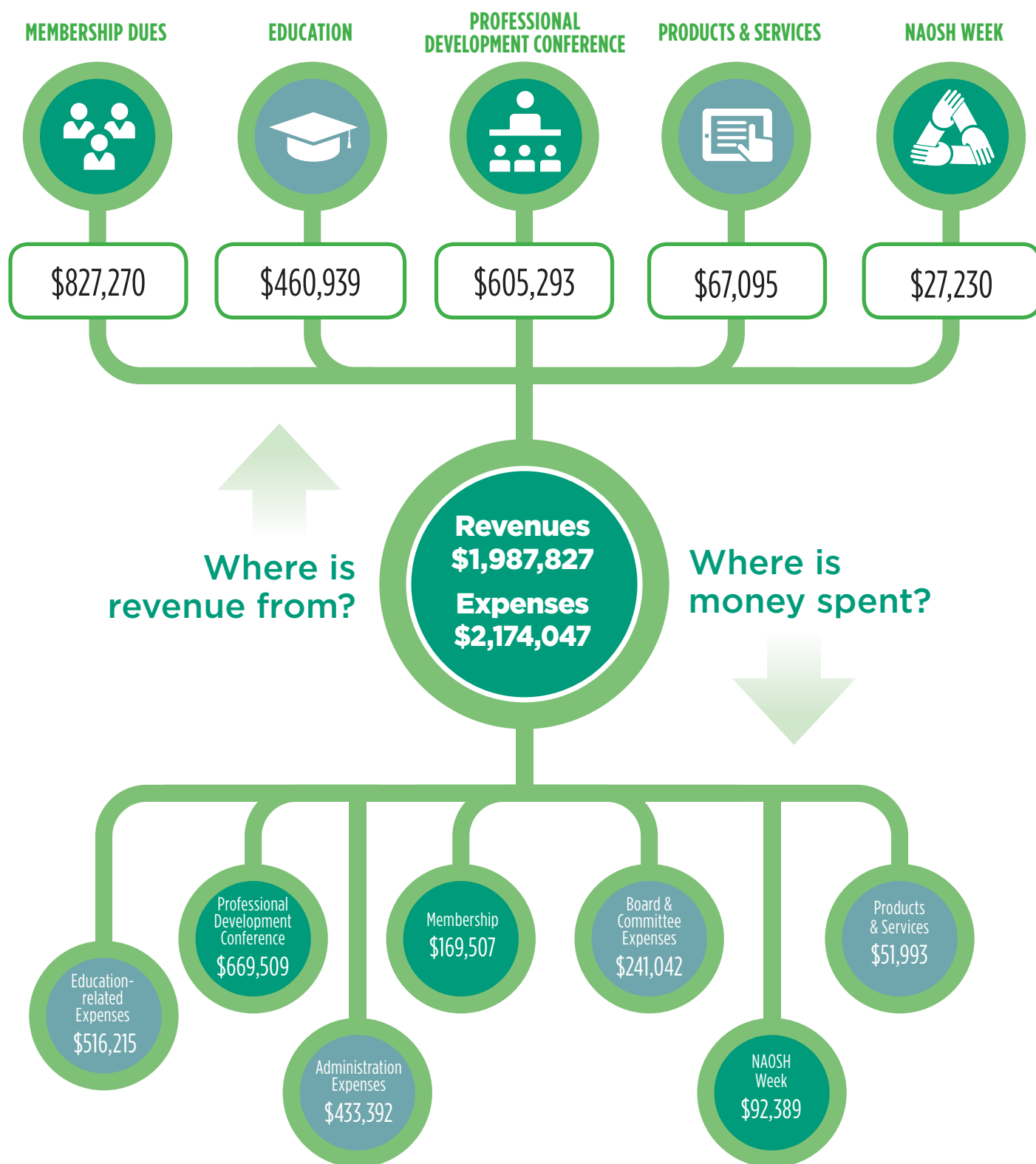
Yours in safety,

Sincerely,

Jim Hopkins, CHSC, CRSP
President and Professional Member

CSSE Financial Snapshot

REVENUES AND EXPENDITURES FOR 2015-2016



Audited financial statements are posted to the member area of the CSSE website under 'Resources and Publications'.

The Certified Health and Safety Consultant (CHSC) Certification

The Certified Health and Safety Consultant (CHSC) certification, instituted in 1994 by the Canadian Society of Safety Engineering, is the premier certification of leading OHSE Professionals. It recognizes and promotes excellence in professional consulting within and to business and industry and government agencies at all levels. CHSCs provide consultative leadership in workplaces and communities across the nation and around the world.

In 2012 the Board of Directors approved the tagline '**Proven Leadership in OHSE**' communicating the advantages for decision-makers in business, industry, and government of retaining the services of health and safety professionals who hold the CHSC.

SIX PROVEN ADVANTAGES FOR INCLUDING A CHSC ON AN OHSE TEAM INCLUDE:

- 1 Education and Experience in the Profession
- 2 Demonstrated Commitment and Specialized Training and Examination
- 3 Ethical Behaviour supported by a peer-reviewed CHSC Code of Conduct
- 4 Assurance of Protection when acting on Professional Advice
- 5 Continuous Professional Growth monitored through the audited CHSC Maintenance Program
- 6 Independent Consultative Advice and Leadership

CHSC MAINTENANCE PROGRAM

In addition to maintaining membership in the CSSE and submitting proof of professional liability insurance or company indemnification on an annual basis, CHSCs are required to participate in the CHSC Maintenance Program wherein the CHSC reports ongoing **Continuing Education, Professional Practice, and Leadership & Volunteer Activity** over a five-year cycle. Each year, the CSSE conducts a minimum 5% random audit of CHSC maintenance programs.



ENTRY TO THE CHSC PROGRAM

Applicants to the CHSC program must be an internal or external health and safety advisor or consultant and have a minimum of five years cumulative work experience (within the last seven years) with a minimum of 51% HS related duties and in addition have completed either a one-year college or university certificate or diploma program in OHSE or a two-year college or university non-OHSE program.

CHSC candidates are required to successfully complete examination (minimum 75% standard) in three core and three elective CSSE Professional Development Courses and to uphold the CHSC Code of Conduct. Members who have successfully completed courses may retroactively apply them after being approved to enter the CHSC program.

CSSE PROFESSIONAL DEVELOPMENT COURSES

Structured for strategic leadership and practical application, CSSE's current education program includes:

- **Essential Value of OHS Management Systems**
- **Applied Risk Communication**
- **Consulting Skills for the OHS Professional**
- **Obligations & Liabilities of the OHS Professional**
- **Project Management for the Health & Safety Professional**
- **Measurement & Evaluation in OHS Managed Systems**
- **Essentials of Risk Management for OHSE Practitioners**
- **Assessing OHSE Training Needs & Options**
- **Developing Effective OHSE Training Courses**

Courses are included in the CHSC Program and are also taken by other OHSE practitioners for professional development.

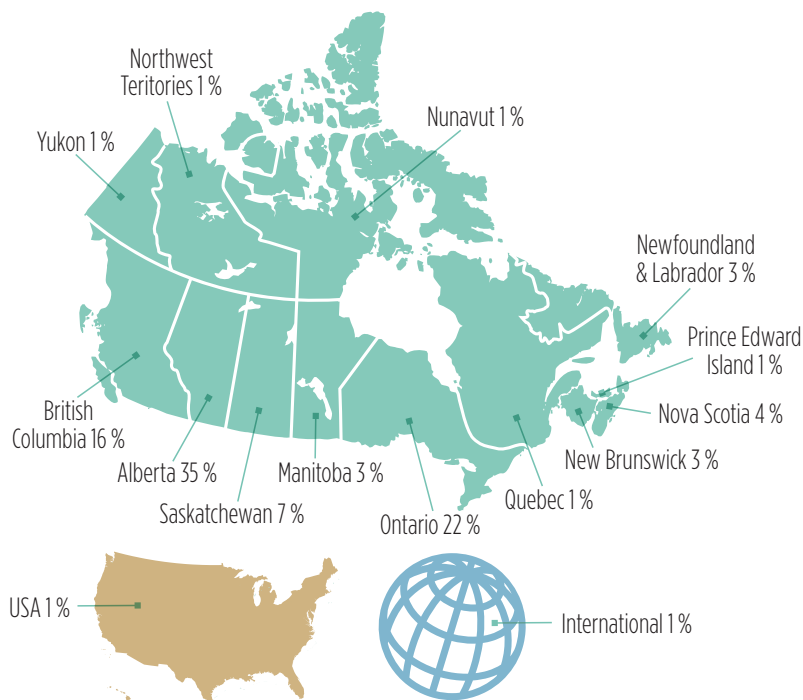
CSSE Professional Development 'WIKI'

In support of CSSE's vision, "shapes the safety profession in Canada by working collaboratively with its members and partners", the Education Committee instituted the CSSE Professional Development 'Wiki' or PD 'Wiki' for short.

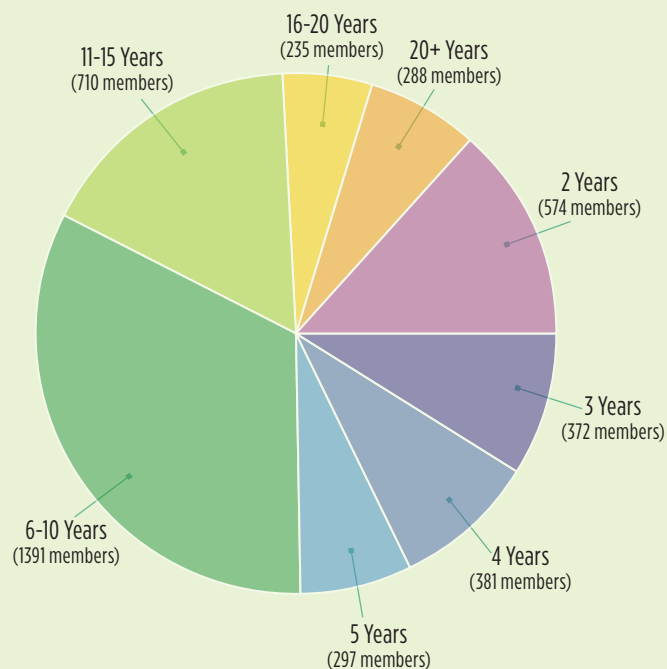
The PD 'Wiki' is the go-to resource for locating programs, courses, and training related to professional development in the OHSE field. Descriptive entries with capability to add links, at no cost to providers, are welcome from for-profit and not-for-profit companies, institutions, and organizations offering professional development in OHSE. New listings or updating current listings are managed by going to www.cssewiki.org

Read hundreds of entries listed in the PD Wiki from "Accident/Incident Investigation" to University diploma and certificate programs and to "Young Workers Safety".

Where WE live



Length of Membership



CSSE Staff

Perry Ruehlen, CAE

Executive Director
Staff Liaison for Outreach Committee
& NAOSH Week Committee

Terry Cunningham, CMP

Conference Director
Staff Liaison for Professional Development
Conference Committee

Karim Jiwan

Finance Director

Diana Parks, M.Ed.

Director of Education Services
Staff Liaison for Education Committee

Renzo Pella

Awards Manager
Staff Liaison for Awards Committee

Michael Reid

Communications Manager
Staff Liaison for Communications Committee
and Member Relations Committee

Sheri Laudy

Project Manager, Education/CHSC Certification

Charles Ng

Membership Coordinator

Tammy White

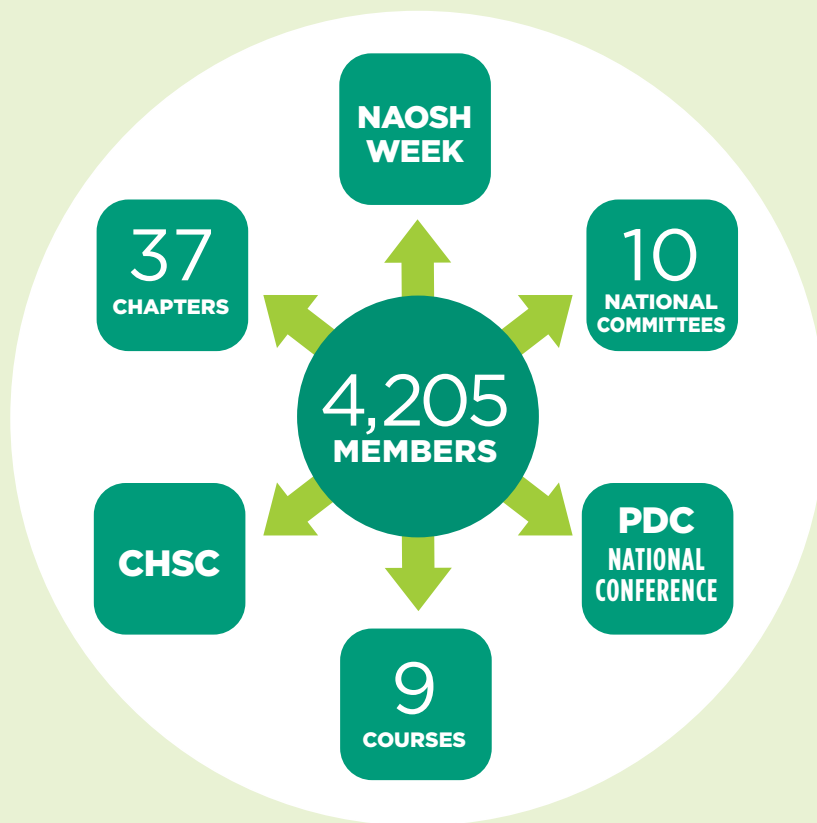
Administrative Coordinator

Myra Chong

Finance Coordinator

Wil deGast

Technical Support





2015 / 2016

BOARD OF DIRECTORS

PRESIDENT

Mr. James (Jim) B. Hopkins, CHSC, CRSP
Chief Safety Officer, OC Transpo

VICE-PRESIDENT/TREASURER

Ms. Kathy Tull, CHSC, CRSP
Industry Specialist
WorkSafeBC

EXECUTIVE DIRECTOR

Perry Ruehlen, CAE

SECRETARY

Ms. Deirdre O'Reilly, CHSC
Prevention Information Officer
Workers' Compensation Board of Nova Scotia

PAST PRESIDENT

Mr. Andrew Cooper, CHSC
Lead - EHS System Planning & Development Team
Environment, Health & Safety Department
University of Alberta

RVP BC/YK

Ms. Lynn Cohoe, CRSP
Regional Safety Manager, First Canada

RVP MB/SK

Mr. Jeff Peters, CHSC, CRSP, CHRP
Human Resources Consultant - Workplace
Health & Safety
City of Regina

RVP Atlantic

Mr. Donald Ross, CHSC
Senior Investigator
Transportation Safety Board of Canada

RVP AB/NWT/NT

Mr. Glyn Jones, CRSP
Partner
EHS Partnerships Ltd.

RVP ON/QC

Mr. Thomas Abercrombie, CHSC, CRSP
Inspector - Healthcare
Ontario Ministry of Labour

CHAIR, EDUCATIONAL SERVICES

Roberta Sheng-Taylor, BA, CRSP, CHSC, Dipl.
(Adult Education),
Director, Strategic Planning and Program
Implementation at Ledcor

CSSE Chapters

British Columbia / Yukon

No. Of Chapters: 7

Member Total: 659

Member Breakdown:

- BC North Central Interior, Ryan Freeman, Chapter Chair – 50 members
- BC Lower Mainland – David Kerr, Chapter Chair – 297 members
- Fraser Valley, Gary Anderson, Chapter Chair – 86 members
- Pacific Rim, Kimberly Meadows, Chapter Chair – 89 members
- Skeena, Vacant, Chapter Chair – 5 members
- Thompson / Okanagan, Bob Patterson, Chapter Chair – 97 members
- Yukon, Shauna Maclean, Chapter Chair – 35 members

Alberta, NWT, Nunavut

No. Of Chapters: 11

Member Total: 1670

Member Breakdown:

- Bonnyville – 6 members
- Calgary, Rob Morphew, Chapter Chair – 651 members
- Central Alberta, Dan Trottier, Chapter Chair – 104 members
- Edmonton, Corey Papp, Chapter Chair – 650 members
- Fort McMurray, Roxane Madsen, Chapter Chair – 72 members
- Lethbridge, Nick Scheffter, Chapter Chair – 27 members
- Lloydminster – 0 members
- Mid West AB, Ronald Lorenz, Chapter Chair – 12 members
- North of 60 NWT, Cara Benoit, Chapter Chair – 33 members
- Northwestern Alberta, Robert Lefin, Chapter Chair – 80 members
- Southeast AB, Jeffrey Steabner, Chapter Chair – 35 members

Manitoba & Saskatchewan

No. Of Chapters: 3

Member Total: 461

Member Breakdown:

- Manitoba, Alex Ethier, Chapter Chair – 148 members
- Northern Light, Patrick Hauser, Chapter Chair – 182 members
- South Saskatchewan, Ryan Jacobson, Chapter Chair – 131 members

Ontario & Quebec

No. Of Chapters: 9

Member Total: 951

Member Breakdown:

- Barrie, Drew Douglas, Chapter Chair – 47 members
- Bluewater, Dante Cateni, Chapter Chair – 55 members
- Eastern ON, Greg Swan, Chapter Chair – 151 members
- Golden Triangle, Jennifer Lennon, Chapter Chair – 106 members
- Hamilton, David Lindeman, Chapter Chair – 143 members
- London & District, Stacy Richardson, Chapter Chair – 54 members
- Mid North Ontario, Daryl McIntyre, Chapter Chair – 31 members
- Northwestern ON, Kerri Bernardi, Chapter Chair – 27 members
- Toronto, Sandra Beniuk, Chapter Chair – 337 members

Atlantic Region

No. Of Chapters: 5

Member Total: 433

Member Breakdown:

- Avalon, Brian Good, Chapter Chair – 120 members
- New Brunswick, Dan Ouellette, Chapter Chair – 116 members
- Nova Scotia, Deirdre O'Reilly, Chapter Chair – 142 members
- PEI, Alan McCormick, Chapter Chair – 18 members
- Western Nova Scotia, Wanda Balsor, Chapter Chair – 37 members



Awards Committee

Canadian NAOSH Week Committee

Education Steering Committee

Member Relations Committee

Outreach Committee

Communications Committee

Professional Development
Conference Committee

Awards Committee

COMMITTEE PROFILE

The mandate of the committee is to ensure that worthy CSSE members are recognized by their peers for their efforts to improve the safety profession and reduce accidents in their workplaces and beyond. The committee provides a means of recognizing persons and groups throughout the organization that are making a difference in the world of workplace safety, health and environmental to motivate people to participate and to share the successes of those who receive the awards.

CORE DELIVERABLES 2015-2016

- Reviewed 22 award nominations, assisted in the selection of the chapter, regional and national winners
- Reviewed and selected National Winners
- Received 8 student bursary submissions, assisted in the selection of 7 winners

COMMITTEE MEMBERS:

Chair - Dave Turner, CRSP, Turner Safety Systems Ltd.

Wanda Balsor, CHSC, ENNIS Security Services Ltd.

Shannon Bolger, Benchmark Safety Inc.

Pam Davis, CRSP, Work.N.Well

Wes Guenther, City of Calgary

Kevin D Moore, CHSC, Purolator Courier Inc.

Deirdre O'Reilly (Board Liaison), CHSC, Workers' Compensation Board of Nova Scotia

Melanie Pettefer, CHSC, CRSP, Yukon Energy Corporation

Carolyn Pfau, Seven Generations Energy Ltd.

David Wentzell

2015 RECOGNITION OF EXCELLENCE AWARD WINNERS:

OUTSTANDING ACHIEVEMENT BY A PROFESSIONAL OR GROUP

Shannon Nicholson

SAFETY PROFESSIONAL OF THE YEAR

Peter Sturm, CHSC

SPECIAL PROJECT

Weatherford Canada, HSE Excellence Program

CHAPTER OF THE YEAR

Northern Light Chapter

CSSE OHSE BURSARY AWARD WINNERS:

Melissa Godbout

Danielle Klaver

Vanna Lymberopoulos

Abiodun Ogogo

Krisstina Syms

Sasan Tahvili

Harry Wiseman

Canadian NAOSH Week Committee

COMMITTEE PROFILE

The Canadian North American Occupational Safety & Health (NAOSH) Week Committee makes recommendations to the CSSE Board of Directors for the development, coordination, administration and evaluation of the Canada-wide NAOSH Week Program.

CORE DELIVERABLES 2015-2016

- Selected the location for the National Launch of NAOSH Week in May and oversaw all the activities
- Selected the theme and slogan to be used each year and compiled the Resource Guide
- Reviewed applications for funding for NAOSH events
- Reviewed NAOSH Week resources to support activities across Canada
- Reviewed and updated NAOSH Week products for 2015 and 2016

COMMITTEE MEMBERS:

Chair: Yvonne O'Reilly, CRSP, O'Reilly Health & Safety Consulting

Chris Banbury, CRSP, NOVA Chemicals Corporation

Kathy Tull (Board Liaison), CHSC, CRSP, WorkSafeBC

Mike Gordon - P.Eng., Workplace Engineering Solutions

Patrick Hauser, CRSP, University of Saskatchewan

Ron Kelusky, Public Services Health and Safety Association

Blaise MacNeil, CRSP

Richard Dulong, CHSC, NCSO, CSS, Northern Sun Safety Inc.

Kimberly O'Connell, CIH, ROH, CRSP, BluMetric Environmental Inc. (WESA)

2016 NAOSH Week Launch

The 2016 National Launch of NAOSH Week was held in Ottawa and was attended by over 100 guests including the Honourable Mary-Ann Mihychuk, Minister of Employment, Workforce Development and Labour, along with a host of others. Joining her to address the delegates were the chief prevention officer for the Ministry of Labour, Chair of WSIB and the Executive Director of Public Services Health & Safety Association.

At the launch was a panel discussion with our key partners – the Board of Canadian Registered Safety Professionals (BCRSP), Threads of Life, the American Association of Safety Engineers (ASSE), Canadian Centre for Occupational Health & Safety (CCOHS) and the Mental Health Commission of Canada (MHCC).

Next year we will celebrate the 20th anniversary of NAOSH Week with the 2017 launch in Ottawa on Monday, May 8th. The National NAOSH Week Committee will enjoy working with the CSSE's Ottawa team to make this another memorable event – using change management to Make Safety a Habit a cultural change in every Canadian workplace.

CSSE is proud to be a supporter NAOSH Week. Our mission is to continue to celebrate safer workplace and ensure safety is a natural and every day habit among Canadian employers, contractors and workers!

2015 NAOSH Award Winners

BEST NEW ENTRY

- Black Cat Blades

BEST REPRESENTATION OF THEME

- Quilliq Energy Corporation

MOST INNOVATIVE

- Capital Regional District

BEST OVERALL

- Shaw Communications



Education Steering Committee

COMMITTEE PROFILE

It is the mandate of the Education Committee to provide high quality educational programs that meet the professional development needs of CSSE members and to oversee the Certified Health and Safety Consultant (CHSC) program.

The committee is a national steering committee with six subcommittees composed of CSSE members who have an adult education background/specialty and are committed to the ongoing development and implementation of effective occupational health and safety professional development courses and programs. Additional ad hoc task groups are established on an identified needs basis.

The steering committee makes recommendations to the Board of Directors through the Education Director, an elected position of the Board. Education Committee members are required to sign a Declaration of Ethical Conduct.

CORE DELIVERABLES IN 2015-2016

- Implemented a new professional development elective course on the Essential Value of OHS Management Systems in Fall of 2015
- Implemented the Applied Risk Communication and Obligations & Liabilities courses for delivery in the Fall of 2016
- Continued to pursue potential options for granting equivalency to CHSC elective courses
- Improved online capability of CHSCs to report their maintenance programs and upload supporting documentation to the CHSC Designates Area
- Completed Phase 6 & 7 of the CHSC Maintenance Program ending December 31, 2015 and identified a minimum of 231 eligible maintenance programs to be audited
- Reviewed potential options for offering professional development courses in an online format

COMMITTEE MEMBERS:

Chair: Roberta Sheng-Taylor (Chair and Board Liaison), CHSC CRSP, Ledcor Group

Alex Chan, CFIOHS CHSC

Robert (Bob) Montgomery, NCSO CHSC CRSP, West Ltd

Paul Westcott, CD CRSP CHSC CRM

Cynthia Duncan, CHSC CRSP CMIOHS NCSO, Shell

Stewart Franck, CRSP, Fisheries Safety Association of Nova Scotia

CSSE Education Sub-Committees

The six subcommittees are chaired by members of the Steering Committee and additional CSSE members are sought to work on subcommittee projects and directions. Members are encouraged to volunteer.

COURSE MANAGEMENT & DEVELOPMENT

Chair: Cynthia Duncan

The subcommittee reviews current courses and programs and based on needs analyses makes recommendations for revisions or upgrades to courses. The subcommittee also makes recommendations and oversees the development, purchase, or partnering with other education institutions, for courses or programs for OHS professionals based on needs analyses.

INSTRUCTOR LIAISON

Chair: Stewart Franck

The subcommittee makes recommendations and monitors contractual obligations with Instructors, the evaluation of instruction, Instructor professional development needs and overall maintains the relationships between Instructors and the Society.

INSTRUCTOR SEARCH

Chair: Linden Gossen, B.Ed., CRSP

The subcommittee makes recommendations and conducts the searches for new or additional Instructors of CSSE courses based on a needs analysis.

PUBLIC RELATIONS

Chair: Robert R. Montgomery

The subcommittee recommends strategies to increase awareness and value of the CHSC designation and all other CSSE professional development products.

CHSC QUALIFICATIONS AND AUDIT

Chair: Alex Chan

The subcommittee makes recommendations regarding the qualifications of CSSE members to enter the CHSC Program, enhancements to the CHSC Maintenance Program, oversees the completion of maintenance programs, and conducts the annual audit.

STANDARDS

Chair: Paul Westcott

The subcommittee recommends and maintains education policies, directives, procedures, and practices related to the delivery and instruction of courses as well as the CHSC program.

56 Courses

706 Active CHSC's

746 Participants

Member Relations Committee

COMMITTEE PROFILE

The mandate of the Member Relations Committee is to identify, develop, implement and/or improve on the membership processes within the CSSE and make recommendations for the improvement of internal and external communications. Additionally, the Committee identifies ways to grow, retain and engage the membership. The Committee does this in support of CSSE's overall strategic plan.

CORE DELIVERABLES 2015-2016

- Refocusing attention to resources for chapters to support members at a grassroots level
- Continued to develop/build on the CSSE member value proposition and communicate it to our members
- Initiated a re-visiting of the 2013 Member Needs Survey to identify what hasn't yet been addressed

COMMITTEE MEMBERS:

Chair - Melissa Gould, CHSC, CRSP, Linamar

Glyn Jones (Board Liaison), CRSP, CIH, EHS Partnerships

Arden Langille, CRSP, CES, DND

Glenn Matthieson, CSO, Solaris Safety Management

James McLeod, CRSP, Clean Harbors

Stacy Richardson, CRSP, Technical Services Rep OH&ES, 3M Canada

Outreach Committee

COMMITTEE PROFILE

The mandate of the Outreach Committee is to provide leadership and identify opportunities to position CSSE as a national leader and voice of the safety profession and in shaping the future of the profession in Canada. This support will include the development of engagement and sustainability opportunities, the effective engagement of stakeholders and alignment with recognized international standards and organizations.

The Committee will support the Board to effectively promote the profession. The Committee will identify opportunities and approaches to promote health and safety in key business and economic venues through their planning and/or support of regular health and safety events and commemorations; and raise the bar for health and safety performance.

CORE DELIVERABLES 2015-2016

- Outreach to Academia, connecting with post secondary schools offering OHS programs to determine areas of mutual interest benefiting the future generation of safety practitioners
- Outreach to Safety Associations, connecting with other associations across Canada on areas of mutual interest to help shape the safety profession in Canada and increase value to members
- Sustainability, increasing members awareness of the importance of health and safety within sustainability and proving members with the information needed to have discussions with senior level executives on the importance of reporting OHS metrics within sustainability reporting Committee members, delete Glyn Jones and add Lynn Cohoe (board liaison) CRSP Regional Safety Manager, First Canada

COMMITTEE MEMBERS:

Chair - Stephanie Benay, CHSC, CRSP, WorleyParsons Canada Ltd.

Peter Sturm, CHSC, CRSP, STURM Consulting

Lynn Cohoe (Board Liaison), CRSP, First Canada

Tanya Steele, (R)CSO, CSS, CHSC, TR Steele Company

Bruce Jackson, CRSP, CMIOH, CET, WorkSafeBC

Corinne Paul, CRSP, CRM, Husky Energy

Thomas Abercrombie (Board Liaison), CHSC, CRSP, Ministry of Labour

Communications Committee

COMMITTEE PROFILE

The mandate of the Communications Committee is to identify current communication processes within the organization and make recommendations for improvements for both internal and external stakeholders.

CORE DELIVERABLES 2015-2016

- Developed and launched the new online CSSE national website
- Launched the Access CSSE portal for online training and document management for all CSSE stakeholders
- Established the National Digital Working Group to support the new national CRM systems
- Contact publications were distributed quarterly

COMMITTEE EXECUTIVE MEMBERS:

Chair - Dan Trottier, CHSC, CRSP, Tatonga Consulting

Donald Ross (Board Liaison), CHSC, Transportation Safety Board of Canada

Cathy Dénoimé, Department of Business and Economics, Algoma University

Denise Howitt, CHSC, CRSP, EHS Partnerships

Rob Adams, CHSC(R), CRSP, Environment and Parks Monitoring & Science Division
Government of Alberta

CONTACT WORKING GROUP:

Lead - Cathy Dénoimé, Department of Business and Economics, Algoma University

Lead - Rob Adams, CHSC(R), CRSP, Environment and Parks Monitoring & Science Division,
Government of Alberta

Donald Ross (Board Liaison), CHSC, Transportation Safety Board of Canada

Karon Cross, CHSC, CRSP, Rogers Communications Inc.

Tracey Harvie, MapleLeaf

Denise Howitt, CHSC, CRSP, EHS Partnerships Ltd.

David Lindeman, CHSC, CRSP, City of Hamilton

Deirdre O'Reilly, CHSC, Workers' Compensation Board of Nova Scotia

Paul Pascoe, Professional Safety Solutions

Elaine Wolfson, CRSP, Thompson Nicola Training

Editor: **Andrea Szametz**

NATIONAL DIGITAL WORKING GROUP:

Lead - Dan Trottier, CHSC, CRSP, Tatonga Consulting

Aimee Arsenault, Tridon Communications

Alex Ethier, CSO, MAXIM Truck & Trailers

Michael Berube, CRSP, Horizon Health Network

Drew Douglas, Chippewas of Rama First Nation

Ashley Williams, Leavitt Machinery

CANADIAN JOURNAL OF OCCUPATIONAL HEALTH & SAFETY (CJOHS) WORKING GROUP:

Lead - Cathy Dénoimé, Department of Business and Economics, Algoma University

Donald Ross (Board Liaison), CHSC, Transportation Safety Board of Canada

David Howe, CHSC, Site Safety Inc.

Denise Howitt, CHSC, CRSP, EHS Partnerships Ltd.

David Hunt, EHS, Carleton University

Manobhram Nellutla, FIOSA-MIOSA Safety Alliance of B.C.

Gene Shematek, GMS & Associates, Ltd.

Dan Trottier, CHSC, CRSP, Tatonga Consulting

Sandra Wilson, CHSC, CRSP, Fanshawe College

CONNECTING WITH CSSE MEMBERS AND SAFETY PROFESSIONALS

The CSSE leverages a variety of communication tools to engage members and to attract the attention of safety professionals around the world. CSSE works hard to engage audiences and keep them informed through daily, weekly, bi-weekly and quarterly publications that provide information about the Society's programs and services. The complete list of CSSE communication tools is identified and described below:

Contact eMagazine

Contact is a quarterly eMagazine designed to provide information about members, by members and for members. Articles are intended to keep members informed about the latest news from within CSSE and the safety profession. The latest edition of **Contact** and archived copies can be viewed on the CSSE website at **www.csse.org**.

Canadian Journal of Occupational Health & Safety

This journal is a new vehicle, to be published twice yearly. It is designed to showcase in-depth, leading-edge information on the occupational health and safety field... with a distinct Canadian flavour.

CSSE & Beyond

CSSE & Beyond is a member-only bi-weekly e-newsletter providing members with Society activity updates, news from the profession and industry trends.

www.csse.org

The CSSE website is the touch point for everything CSSE.

Inside CSSE Blog

The purpose of the blog is to provide an avenue for CSSE news and to eventually replace CSSE & Beyond. *Contact* will be tied into the blog and also to our social media channels.



CSSE's New Digital Framework

REGIONAL COMMUNICATIONS SYSTEM

A two-year comprehensive look at enhancing CSSE members' engagement culminated in the launch of a new online presence. This is exciting news for CSSE members and will take CSSE forward in leveraging state-of-the-art tools and systems to enable higher-level communication through social media engagement, live content management and chapter website management. Several Alberta Chapters have been actively involved with this initiative since its inception two years ago. At the time, the Alberta/Nunavut/NWT region was looking at opportunities to get a regional communications system up and running. Eventually, the options under regional consideration reached the CSSE National level and, as greater engagement resulted from seeing the broader implications, the board of directors approved an initiative with a national scope. There are three key elements to this new system:

WEBSITES:

CSSE National will now support high-end Chapter websites. The Chapters will have their own websites that they control after receiving a "starter package", which can be modified to suit specific Chapter needs. The goal is to ensure that Chapters can do what they want to do at the "real grassroots" level to meet the needs of their members. Each Chapter will have the opportunity to take full ownership of the content and will be provided support from regional experts.

ACCESS CSSE:

This is an online library that will be used to host video content as well as an electronic library for meeting minutes, historical files and any other desired content (e.g., all Chapter meeting minutes for its members to access, storage for committee work, etc.). In future, it is expected there will be live streaming, including opportunities for Chapters to live stream their meetings to Chapter members who cannot attend the sessions.

SOCIAL INTEGRATION:

This will be an opportunity to use the system to engage internal and external stakeholders via social media tools like Twitter, LinkedIn and Facebook (e.g., non-CSSE members or "external" individuals can log in and ask for access through LinkedIn, Facebook, Twitter, etc.).

Currently, the project is being overseen by the Digital Working Group (DWG), which is part of the national Communications Committee. As things progress, the national DWG will be transformed into an entity with two members representing each region, and who can help local Chapters by providing hands-on technical support. An additional collection of experts will also be organized at the Chapter level within each region to participate at arm's length to the DWG to capitalize on the power that the new system has to offer.



Professional Development Conference Committee

COMMITTEE PROFILE

The mandate of the Conference Committee is to set the strategic direction for the CSSE's Professional Development Conference (PDC). The committee is the decision-making body that ensures that the CSSE provides high-quality programs, speakers and entertainment at the PDC to meet the professional development needs of CSSE members. The committee also assists with the recruitment of exhibitors and sponsors.

CORE DELIVERABLES 2015-2016

- Functions of the committee include: theme selection, speaker selection, gift selection, identification of potential sponsors and exhibitors, assistance in communicating and promoting the PDC, acting as conference ambassadors, session moderators, evaluation of the conference to identify opportunities for improvement and identification of potential new programs, projects and strategies
- Reviewed over 120 proposals submitted through the Call for Presentations process and selected 56 proposals for concurrent sessions and half-day workshops offered at this year's conference in Vancouver, British Columbia
- Meets monthly to review progress to the planning project plan and how the work of the two sub-committees is progressing
- Program Sub-Committee: Responsible for checking speaker references, assembling the conference program from the accepted submissions, creating a back-up presenter listing, and securing replacement speakers or topic-specific presentations, as required. Also responsible for the annual review of the Call for Presentations information and submission forms
- Exhibitor/Sponsor Sub-Committee: Responsible for creating and maintaining the potential exhibitor/sponsor list and reaching out to potential exhibitors and sponsors in an effort to sell the exhibit space and the sponsorship program

COMMITTEE MEMBERS:

Chair: Susanne McLaren, CHSC, RN COHN(C), McLaren Health and Safety Consulting
Peter Sturm, CHSC, CRSP, Sturm Consulting
Kimberly Meadows, CSS, CRSP, City of Victoria
Barry Fitzgerald, CRSP, B.Tech, Government of NL
Deborah Blackmore, University of New Brunswick
Mary Moltman, Pacific Safety Center
Kimberly Blaney, CRSP, CSP, Sybron Dental Specialties
Norm Ralph, CHSC, CRSP, CDMP, BC Rapid Transit Company
Jeff Peters (Board Liaison), CHSC, CRSP, CHRP, City of Regina
Brian Fisher-Smith, CRSP, CRM

2017
HALIFAX
Nova Scotia



2017
SEPTEMBER
17th - 20th

Annual Professional Development Conference



The Annual PDC is CSSE's flagship event, bringing together almost 1,000 occupational health, safety and environmental practitioners from across the country and around the globe. Each year the conference location alternates between eastern and western Canada. Planning for the next conference commences before the current conference even begins, making the planning a year-round activity. The CSSE PDC has become the largest conference in Canada for senior workplace safety practitioners.

CSSE Partnerships: Participation Outside the Organization

Association Quebecoise pour l'hygiène, la santé et la sécurité du travail

The Canadian Society of Safety Engineering (CSSE) and the Association québécoise pour l'hygiène, la santé et la sécurité du travail (AQHSST) in Quebec have entered into discussions on forming a partnership between the two respective organizations. AQHSST is the largest safety associations in Quebec. The two organizations have been discussing ideas to promote access to areas such as continuing education offerings, conferences, and web sites to provide value to the membership in both organizations. The partnering strengths of both of these well-established organizations will help all of our members and ultimately help advance the H&S profession in this country.

Mental Health Commission of Canada

Three years ago, the MHCC championed the development of the world's first National Standard for Psychological Health and Safety in the Workplace (the Standard). The Standard has gained traction since its launch, reaching over 29,000 unique downloads since 2013. Since then the MHCC has been working with partners and employers across Canada to collectively raise the issue in Canada and motivate employers to implement effective strategies to address mental health in the workplace. One of the key initiatives of the MHCC in that regard has been the three-year national case study project (2014-2017), which follows over 40 organizations to identify how the Standard is being implemented in various industries and sectors. The case study project has reached its final stages and we now have a repertoire of promising practices.

Moving forward, MHCC and CSSE will work collaboratively to accomplish objectives aimed at advancing psychological health and safety in the workplace and driving widespread awareness of the Standard. We will do this through organizing and coordinating joint activities including collaboration on outreach, engagement and promotion for workplace mental health, and by actively promoting mutually agreed upon key messages, information, initiatives, tools, and services for workplace mental health.

MINERVA Canada

Minerva Canada is a not-for-profit organization whose mission is to promote the teaching of safety, health and environmental management in post-secondary schools across Canada with a special focus on engineering and business schools.

Minerva Canada's vision is that tomorrow's leaders will strive for excellence in occupational health and safety as an essential component of their corporate management. Minerva Canada encourages colleges and universities to embed safety management education into the core curricula of business and engineering programs.

Minerva Canada also encourages and sponsors the research and publication of case studies, illustrating business effectiveness through safety, health and environmental (SHE) management. CSSE participates annually to assist in the judging of the Safe Design Awards, a competition of health, safety and sustainability case studies put together by business school students.

International Network of Safety and Health Practitioner Organizations (INSHPO)

CSSE is one of the founding members of INSHPO. It is a forum for international collaboration among professional organizations to improve safety and health at work around the world. Occupational safety and health issues are not limited by national borders because of the worldwide distribution of products and services, the widespread migration of workers and the conduct of international corporate activities. Current President, Eldeen Pozniak, CHSC, represents CSSE on the Executive of INSHPO. Activities this year include a study of international competencies for health and safety practitioners and transportability of credentials. This work becomes more important as more Canadian practitioners work outside of Canada. CSSE hosted INSHPO's Annual Business Meeting this September in conjunction with our Professional Development Conference.

Partnerships with the American Society of Safety Engineers (ASSE) and the Institution for Occupational Safety and Health (IOSH)

CSSE has long sat around various tables with ASSE and IOSH in the UK to discuss similar challenges and look at common solutions. INSHPO was created through one such set of discussions in 2000. ASSE partners on NAOSH Week activities. All three organizations are currently looking at health and safety sustainability on a global basis and working to expand the Global Reporting Index to include health and safety (more below).

Global Reporting Index (GRI)

GRI has been on the global scene for many years, but has been focused mostly in the environmental arena. As sustainability gains momentum as a measure of corporate responsibility, representatives from ASSE, IOSH and the American Industrial Hygiene Association (AIHA) began lobbying to see workplace safety and the sustainability of the global workforce put into the index. GRI has agreed that there should be metrics in the index around workforce issues, and has set up a health and safety working group to define those metrics. Past President Peter Sturm has been named to the GRI working group defining health and safety metrics. The initiative is in its early stages but will have implication for Canadian companies moving forward.

Centre For Safety and Health Sustainability

As an adjunct to the GRI initiatives outlined above, the Centre for Safety and Health Sustainability is a non-profit organization set up to speak with a united voice for occupational health and safety professionals worldwide. CSSE Past President Peter Sturm is on the board of directors of the Centre representing CSSE and its members.

Health and Safety Leadership Centre

The CSSE joined the Conference Board of Canada's Health and Safety Leadership Centre, as a non-profit member. CSSE has participated in a survey to students and in the Strategic Planning session for the Centre in August.





Canadian Society of Safety Engineering, Inc.
a federally chartered not-for-profit corporation

468 Queen Street East, LL-02, Toronto, ON M5A 1T7 • Tel: 416 646-1600 • Fax: 416 646-9460 • www.csse.org