



CSSE

Canadian Society of Safety Engineering

MENTORSHIP

Vision

Canada's largest occupational health and safety mentorship program.

Mission

To engage, motivate, and empower occupational health and safety professionals through mentorship opportunities, and to encourage the members of the occupational health and safety community to nurture the growth and development of the next generation of professionals.

Why be a mentee?

Develop a professional network

Career guidance

Professional development guidance

Transitioning into a new role or industry

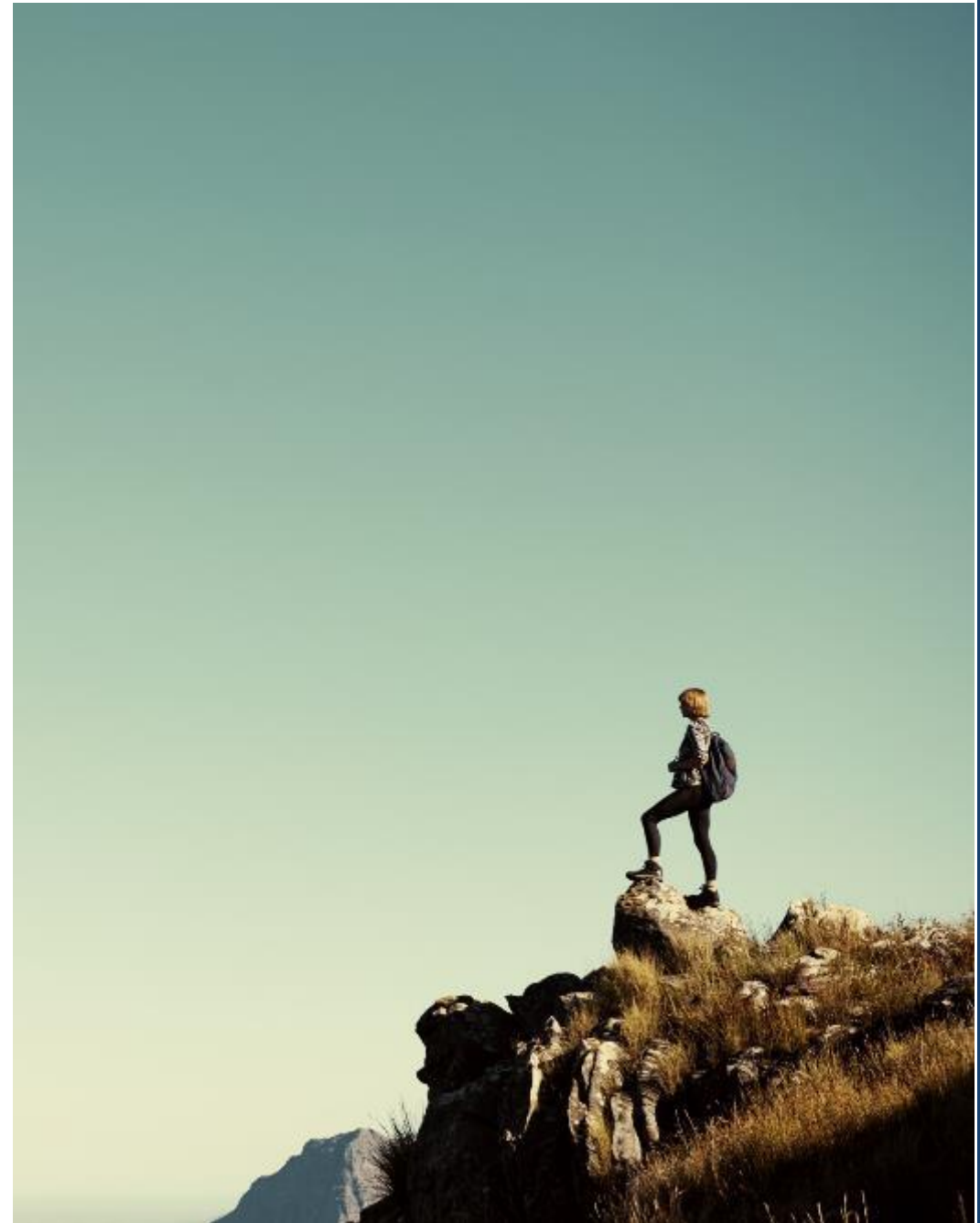
Why be a mentor?

Pass on your knowledge and experience to support safer workplaces in Canada

Develop leadership skills

Earn maintenance points

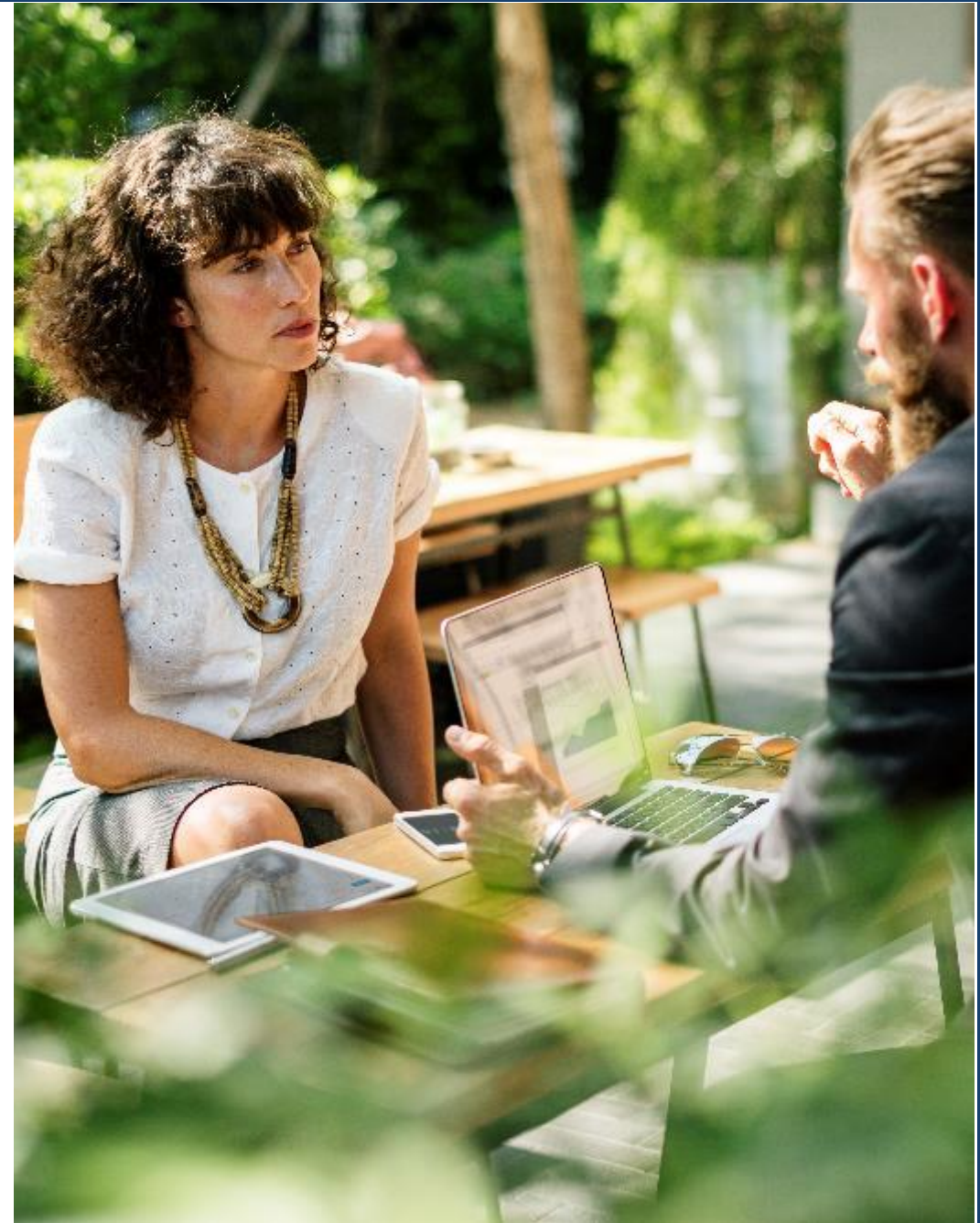
Help shape the next generation



Role of the Mentor

Competent and Available

- Listen and understand as well as coach and challenge your mentee to do better
- Act as a resource to help your mentee navigate their next career steps
- Help them think through options related to career advancement, ongoing education, or other aspects of the mentee's professional development such as certification and accreditation
- Guide mentees through SWOT analysis and other problem solving processes to allow the mentee to come to their own decisions



Role of the Mentee

Initiative Taking and Accountable

- Actively invested in their own development
- Listen and act to implement the knowledge that comes from their mentor
- Responsible for scheduling and driving the agendas of the mentoring meetings.
- Receptive to feedback, open to new ideas and track progress





All CSSE members have access! That includes student, international and retired members.



There is no additional cost to be involved in the program. It is included in the price of membership.



Members can access the mentorship program through their CSSE login.

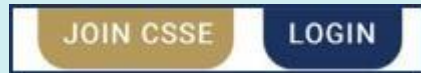


Having difficulties with your login? Please email webmaster@csse.org to have it reset.

Access

1

Login into your member portal. This can be done from any page on the CSSE website by clicking *LOGIN* in the top righthand corner.



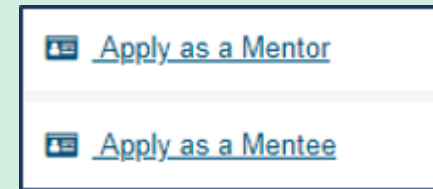
2

Ensure that your profile is accurate and up-to-date. Information is pulled from your profile to complete your mentorship application.



3

Apply as a mentee or mentor (or both!) by clicking on the applicable option under the *My Menu* section.



How to Apply



Mentee applications will be automatically accepted.



Mentors are vetted by the Member Relations Committee. Standards set by leading OHS certificates allow for automatic acceptance.



Mentors are encouraged to have three to five years of work experience. All application fields must be completed for acceptance.



Additional mentor reviews will be done by mentees at three and six months into any mentorship.

Application Review

1

Login into your member portal. In your portal click on the View/Edit My Profile under My Menu.

 [View / Edit My Profile](#)

2

Click on Additional in the top ribbon.

 Additional ▾

3

Hover over Mentorship and choose the profile you would like to update.



Need to edit your application?

Next Steps

Mentees

When your application is submitted you will receive a welcome email. You will then also see a Mentee Panel added to your portal where you can browse and search through the available mentors.

Mentors

Following approval of your application you will receive a welcome email. Mentees will then be able to see your profile and will contact you if they would like to learn more about engaging you as a mentor.



Ambitions of the Mentorship Program

The CSSE mentorship program seeks to connect safety professionals within communities and across the country. We hope that participants will enter the program with specific outcomes in mind and actively strives towards meeting those goals. It is recommended that partnerships last between 6-12 months ending following the completion of the predetermined objectives. We do however encourage the continuation of partnerships that will bring ongoing benefits for both parties.