



# 2020 Health & Safety Index Results

2021/06/16



# Agenda

- 01 Background
- 02 What makes up the Index
- 03 Results
- 04 Other HSI Updates
- 05 Questions



# Agenda

01 Background

02 What makes up the Index


03 Results

04 Other HSI Updates

05 Questions



## Agenda

- 
- 01 Background
  - 02 What makes up the Index
  - 03 Results**
  - 04 Other HSI Updates
  - 05 Questions



# Agenda

- 01 Background
- 02 What makes up the Index
- 03 Results
- 04 Other HSI Updates
- 05 Questions



UPDATE

# Agenda

01 Background

02 What makes up the Index

03 Results

04 Other HSI Updates

05 Questions



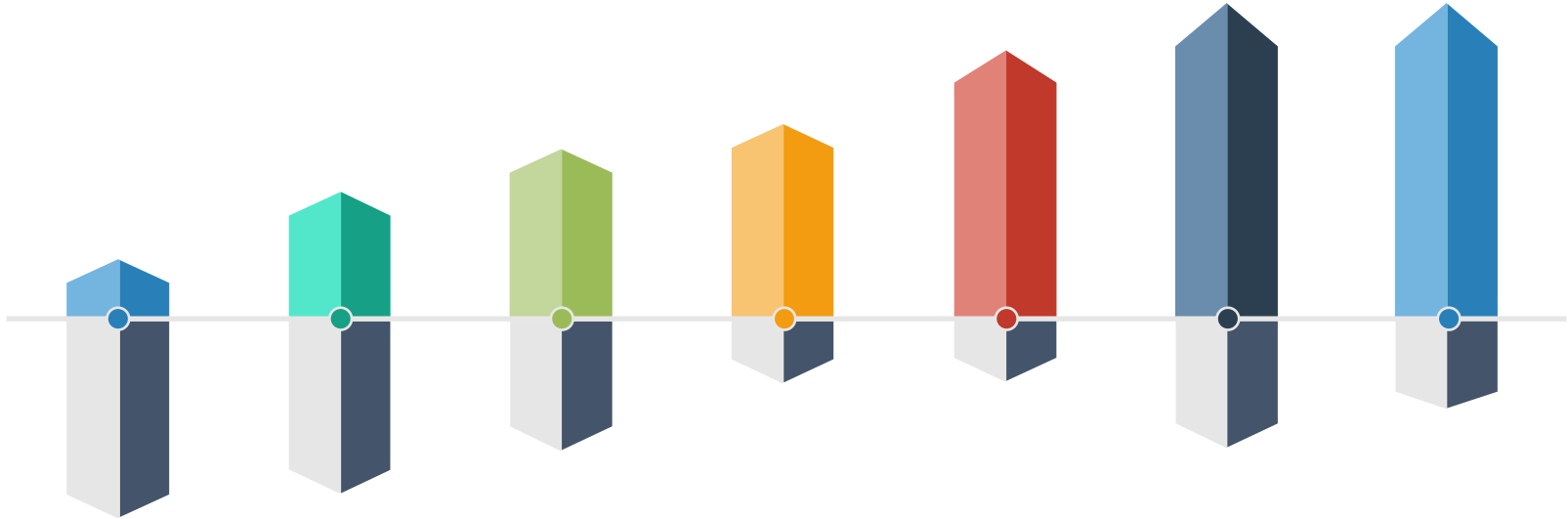
# Health and Safety Index Background

Simple measure that combines multiple health and safety performance indicators into a single, evidence-based measure.



# Health and Safety Index Background

Annually tracks the **yearly directional change** in New Brunswick's overall workplaces health and safety.



# Health and Safety Index Background

**Developed by** WSIB Ontario, based on best practices, and **modeled on** well-known indices such as the United Nation's Human Development Index.



# Health and Safety Index Background

New Brunswick adopted the index in 2019 and are now ready to present our first results, which show the system change for 2020.



# 2019

## Five Components



PREVENTION



EMPOWERMENT



CULTURE



ENFORCEMENT



INJURIES

What is done to **prevent work-related injuries and illnesses**

## MEASURES



SAFETY SUPPORT



INSPECTIONS



PREVENTION ACTIVITY

How people are **involved** in keeping workplaces healthy and safe

## MEASURES



COMPLAINTS



WORK REFUSAL



INVOLVEMENT

# WORKPLACE CULTURE



How employees think about the **priority** placed on health and safety where they work

## MEASURES



Awareness



LEADERSHIP



CULTURE

The **fin**es, **ord**ers and **conv**ictions for poor health and safety practices



## MEASURES



**FINES**



**ORDERS**



**CONVICTIONS**

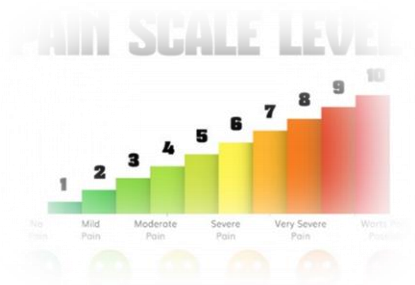


The **injuries that occur and how often**, how long it takes people to get back to work, and the severity of the injuries, including loss of life

## MEASURES



INJURIES

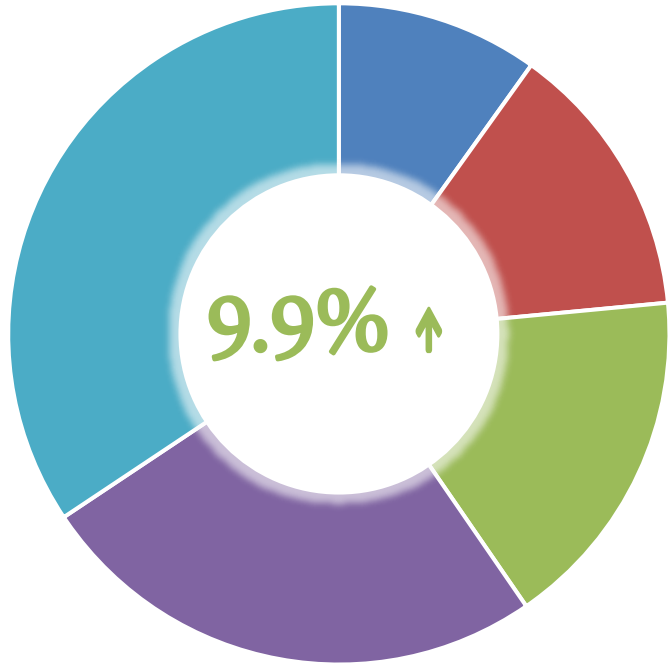


SEVERITY



ON BENEFITS

# HEALTH AND SAFETY INDEX - RESULTS



**OVERALL RESULT**

## COMPONENT WEIGHING

9.9%	PREVENTION
13.6%	INJURIES
16.9%	ENFORCEMENT
25.2%	EMPOWERMENT
34.4%	CULTURE

# HEALTH AND SAFETY INDEX

## Results at Components Level



PREVENTION

-3.7% ↓



EMPOWERMENT

30.2% ↑



CULTURE

0.6% ↑



ENFORCEMENT

8.9% ↑

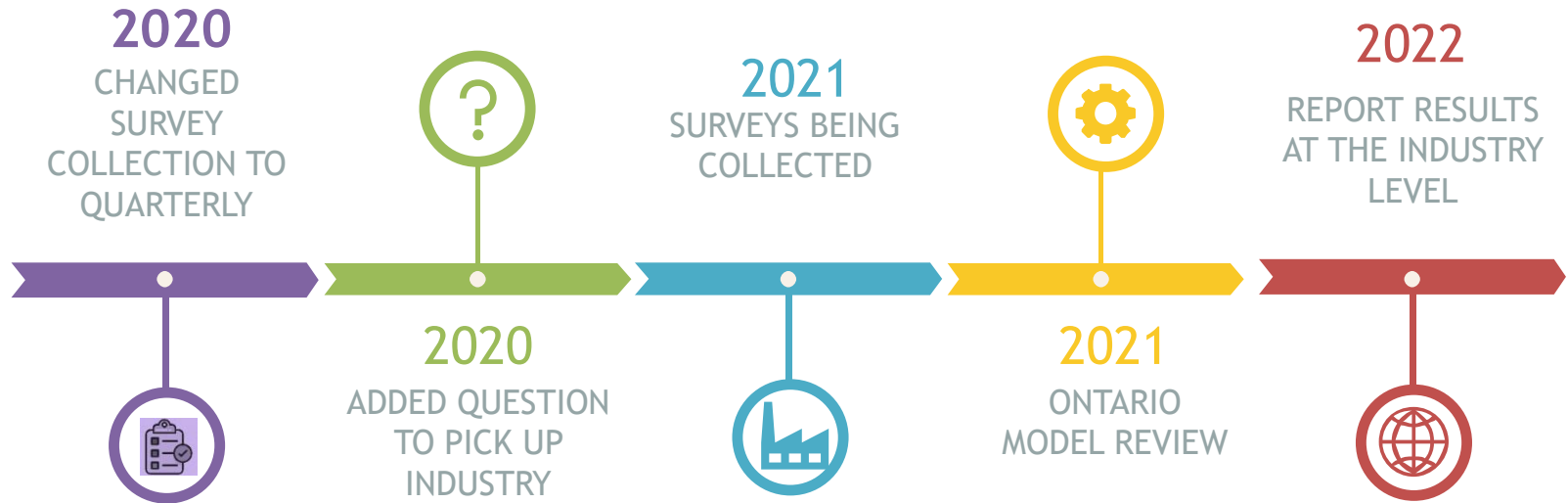


INJURIES

7.0% ↑

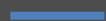
# Health & Safety Index - Other HSI Updates

---





**thank**  
**you**



Tim Petersen